

Avanale's range of high quality FRP water treatment vessels utilise PE or FRP liner, as such they are suitable for residential, commercial and industrial softening and filtering systems. With perfect performance and corrosion resistant, the vessels can be sufficiently equipped with mechanical control valves to meet the expectations and requirements of clients.

Manufactured from high performance composite materials they are filament wound with epoxy resin.

Full choice of pressure vessel available up to 72" diameter with 94" height

Top & Bottom openings available for 16" through 63" tanks

Maximum Operating Pressure 150 psi (10 Bar)

Maximum Operating Temperature 120F(49°C)

100% corrosion resistant.

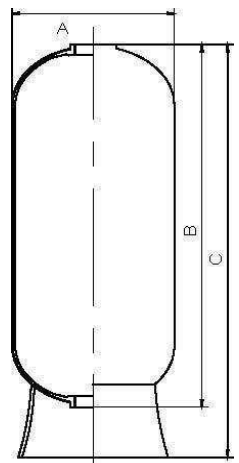
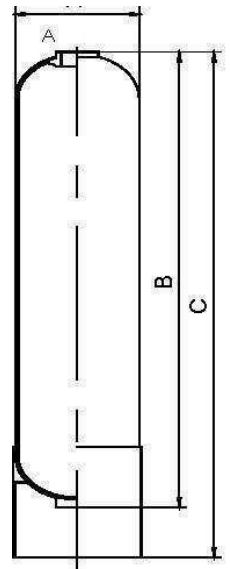
Burst Pressure :42Bar (4 times)

Fatigue Cycle: 100,000 times

Low installation and maintenance

## Tanks with PE Inner Shell

No.	Size		Liner Material	Opening		A Diameter		B Height Without Base		C Height With Base		Capacity	
	(In)	(mm)		Top	Bottom	(In)	(mm)	(In)	(mm)	(In)	(mm)	Gallons	Liters
1	07x13	170x331	PE	2.5" Threaded	N/A	7	181	13	331	13.2	335	1.6	6.3
2	07x17	170x430	PE	2.5" Threaded	N/A	7	181	17	430	17.2	437	2.2	8.5
3	07x35	170x890	PE	2.5" Threaded	N/A	7	181	35	890	35.3	896	5.1	19.1
4	07x44	170x1115	PE	2.5" Threaded	N/A	7	181	43.9	1115	44.2	1123	6.4	24.3
5	08x13	200x331	PE	2.5" Threaded	N/A	8	206	13	331	13.2	335	2.1	7.9
6	08x17	200x430	PE	2.5" Threaded	N/A	8	206	17	430	17.2	437	2.8	10.5
7	08x35	200x890	PE	2.5" Threaded	N/A	8	206	35	890	35.3	896	6.2	23.6
8	08x44	200x1115	PE	2.5" Threaded	N/A	8	206	43.9	1115	44.2	1123	8.3	31.3
9	09x17	220x430	PE	2.5" Threaded	N/A	9	232	17	430	17.2	437	3.5	13.2
10	09x35	220x890	PE	2.5" Threaded	N/A	9	232	35	890	35.3	896	8.3	31.4
11	09x42	220x1067	PE	2.5" Threaded	N/A	9	232	42	1067	42.3	1074	10.2	38.5
12	09x48	220x1221	PE	2.5" Threaded	N/A	9	232	48	1221	48.5	1228	11.8	44.6
13	10x17	240x430	PE	2.5" Threaded	N/A	10	257	17	430	17.2	437	4.4	16.5
14	10x35	240x890	PE	2.5" Threaded	N/A	10	257	35	890	35.3	896	10.2	38.6
15	10x44	240x1115	PE	2.5" Threaded	N/A	10	257	43.9	1115	44.5	1130	13.1	49.6
16	10x54	240x1376	PE	2.5" Threaded	N/A	10	257	54.1	1376	54.7	1390	16.4	62
17	12x48	300x1223	PE	2.5" Threaded	N/A	12	308	48.1	1223	48.5	1233	20.4	77.3
18	12x52	300x1332	PE	2.5" Threaded	N/A	12	308	52.4	1332	52.8	1342	22.4	84.8
19	12x65	300x1640	PE	2.5" Threaded	N/A	12	308	64.6	1640	64.9	1650	28.1	106.3
20	13x44	330x1132	PE	2.5" Threaded	N/A	13	334	44.6	1132	44.9	1142	21.9	82.9
21	13x54	330x1390	PE	2.5" Threaded	N/A	13	334	54.7	1390	55.1	1400	27.5	104
22	14x65	350x1661	PE	2.5" Threaded	N/A	14	360	65.4	1661	65.7	1670	38.5	145.6
23			PE	4" Threaded	N/A	14	360	65.4	1661	65.7	1670	38.5	145.6
24	16x65	400x1662	PE	2.5" Threaded	N/A	16	410	65.4	1662	65.8	1672	49.5	187.7
25			PE	4" Threaded	N/A	16	410	65.4	1662	65.8	1672	49.5	187.7
26		PE	4" Threaded	4" Threaded	N/A	16	410	64.6	1640	72.0	1830	49.5	187.7
27	18x65	450x1640	PE	4" Threaded	N/A	18.5	470	64.6	1640	65.8	1672	62.6	237
28			PE	4" Threaded	4" Threaded	N/A	18.5	470	64.6	1640	72.0	1830	62.6
29	21x62	530x1600	PE	4" Threaded	N/A	21.7	550	63	1600	75.1	1910	82.4	312
30			PE	4" Threaded	4" Threaded	N/A	21.7	550	63	1600	75.1	1910	82.4
31	24x72	600x1830	PE	4" Threaded	N/A	24.4	620	72.1	1830	84.6	2150	124.4	471
32			PE	4" Threaded	4" Threaded	N/A	24.4	620	72.1	1830	84.6	2150	124.4
33	30x72	750x1830	PE	4" Threaded	N/A	30.5	775	72.1	1830	84.6	2150	192.3	728
34			PE	4" Threaded	4" Threaded	N/A	30.5	775	72.1	1830	84.6	2150	192.3
35	36x72	900x1830	PE	4" Threaded	N/A	36.4	925	72.1	1830	84.6	2150	270.3	1023
36			PE	4" Threaded	4" Threaded	N/A	36.4	925	72.1	1830	84.6	2150	270.3
37		PE	6" FLG	6" FLG	N/A	36.4	925	76.4	1940	88.9	2260	270.3	1023
39	42x 72	1070x1800	PE	6" FLG	6" FLG	42.4	1070	76.8	1950	89.4	2270	366.9	1389
40	48x72	1200x1800	PE	6" FLG	6" FLG	48.2	1225	76.8	1950	89.4	2270	460.5	1743
41	60X86	1500x2150	PE	6" FLG	6" FLG	60.2	1530	84.69	2150	96.31	2453	840	3179
42	63X70	1620X1780	PE	6" FLG	6" FLG	63.7	1620	70.1	1780	82.7	2100	681.6	2580
	63X86	1620X2150	PE	6" FLG	6" FLG	63.7	1620	84.69	2150	96.31	2453	924.7	3500



### Tanks with PE Inner Shell and Discharge Port

No.	Size		Liner Material	Opening			A Diameter		B Height Without Base		C Height With Base		Capacity	
	(In)	(mm)		Top	Bottom	Discharge	(In)	(mm)	(In)	(mm)	(In)	(mm)	Gallons	Liters
39	42x72	1070x1800	PE	6" FLG	6" FLG	4" FLG	42.4	1070	76.8	1950	89.4	2270	366.9	1389
40	48x72	1200x1800	PE	6" FLG	6" FLG	4" FLG	48.2	1225	76.8	1950	89.4	2270	460.5	1743
42	63X70	1620X1780	PE	6" FLG	6" FLG	4" FLG	63.7	1620	70.1	1780	82.7	2100	681.6	2580
43	63X86	1620X2150	PE	6" FLG	6" FLG	4" FLG	63.7	1620	84.69	2150	96.31	2453	924.7	3500

### Special Designs, tanks are with FRP Inner Shell

No.	Size		Liner Material	Opening			A Diameter		B Height Without Base		C Height With Base		Capacity	
	(In)	(mm)		Top	Bottom	(In)	(mm)	(In)	(mm)	(In)	(mm)	Gallons	Liters	
1	18x65	450x1650	FRP	4"Threaded	6" FLG	18.5	470	65.6	1665	74.9	1902	66.8	253	
2				6" FLG	6" FLG	18.5	470	65.6	1665	74.9	1902	66.8	253	
3	20x72	500x1800	FRP	4"Threaded	6" FLG	20.5	520	70.9	1800	80.4	2042	89	337	
4				6" FLG	6" FLG	20.5	520	70.9	1800	80.4	2042	89	337	
5	21x62	530x1600	FRP	4"Threaded	6" FLG	21.7	550	63	1600	72.5	1842	88	333	
6				6" FLG	6" FLG	21.7	550	63	1600	72.5	1842	88	333	
7	24x72	600x1800	FRP	4"Threaded	6" FLG	24.4	620	70.9	1800	80.4	2042	126.8	480	
8				6" FLG	6" FLG	24.4	620	70.9	1800	80.4	2042	126.8	480	
9	30x72	750x1800	FRP	4"Threaded	6" FLG	30.5	775	70.9	1800	80.5	2045	195.5	740	
10				6" FLG	6" FLG	30.5	775	70.9	1800	80.5	2045	195.5	740	
11	36x72	900x1800	FRP	4"Threaded	6" FLG	36.4	925	70.9	1800	84.4	2145	283	1071	
12				6" FLG	6" FLG	36.4	925	70.9	1800	84.4	2145	283	1071	
13	48X86	1200x 2150	FRP	6" FLG	6" FLG	48.2	1225	84.69	2150	96.31	2445	538.4	2035	
37	48x96	1200x 2400	PE	6" FLG	6" FLG	48.2	1225	94.5	2400	106.1	2695	657.1	2487	
14	56X86	1400x 2150	FRP	6" FLG	6" FLG	56.3	1430	84.69	2150	96.31	2453	731.6	2769	
15	56x96	1400x2400	FRP	6" FLG	6" FLG	56.3	1430	94.5	2400	107.5	2730	844.1	3195	
39	60x96	1500x2400	PE	6" FLG	6" FLG	60.2	1530	94.5	2400	104.4	2652	958	3626	
16	63X67	1575X1675	FRP	6" FLG	6" FLG	61.45	1560	65.98	1675	79.76	2025	770.7	2917	
17	65X86	1600x2150	FRP	6" FLG	6" FLG	63.6	1640	84.69	2150	96.31	2453	956	3618	
18	65X96	1600x2400	FRP	6" FLG	6" FLG	63.6	1640	94.5	2400	120	3165	1280	4860	
19	72x110	1800x2800	FRP	6" FLG	6" FLG	72.4	1840	110.2	2800	128.3	3260	1681.4	6364	
20	80x126	2000x3200	FRP	6" FLG	6" FLG	80.3	2040	126	3200	145.7	3700	2404	9099	
21	89x126	2200x3200	FRP	6" FLG	6" FLG	88.6	2250	126	3200	145.7	3700	2846.2	10773	

